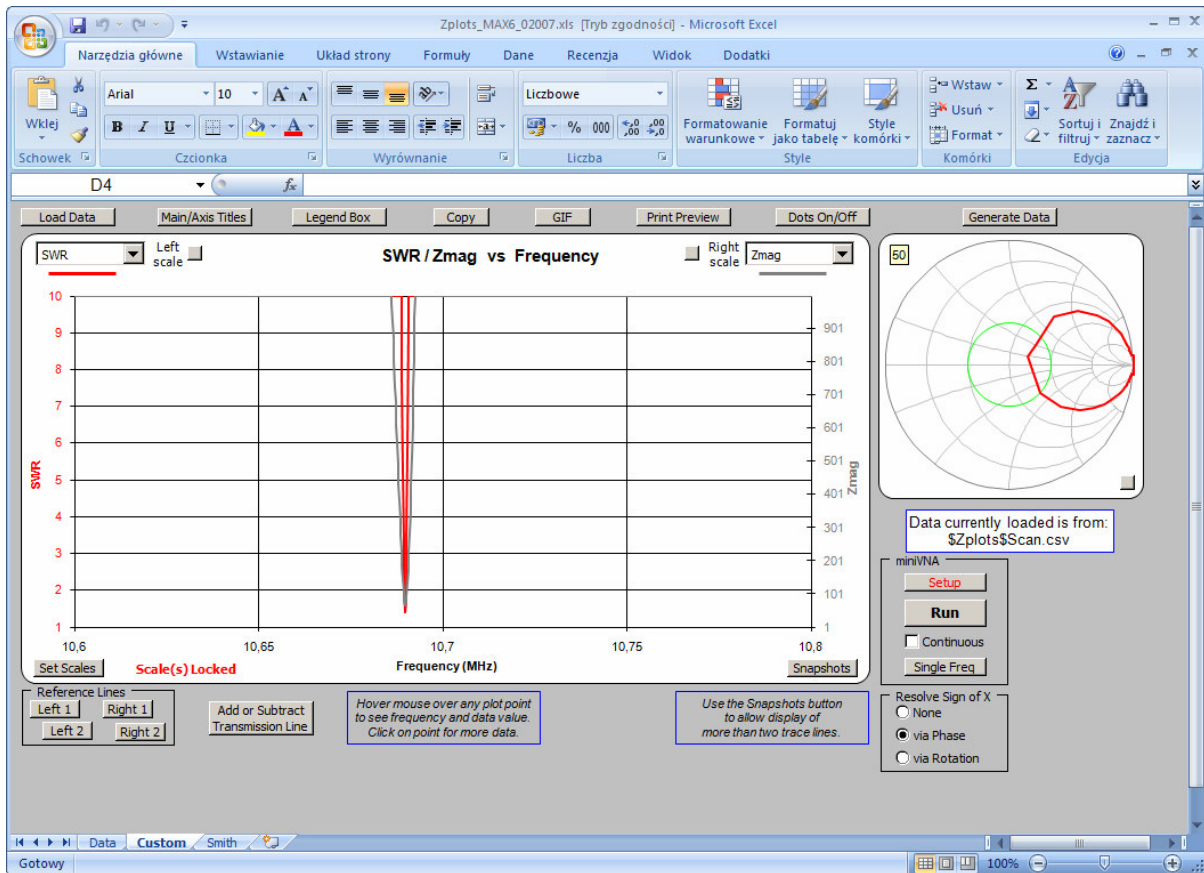


Kwarc 10,7 MHz pomiar w Office 2007 -

[http://www.sp2swj.sp-qrp.pl//SP3SWJ/MAX6/PROGRAM/Zplot\\_O2007/](http://www.sp2swj.sp-qrp.pl//SP3SWJ/MAX6/PROGRAM/Zplot_O2007/)

Zplots\_MAX6\_02007.xls



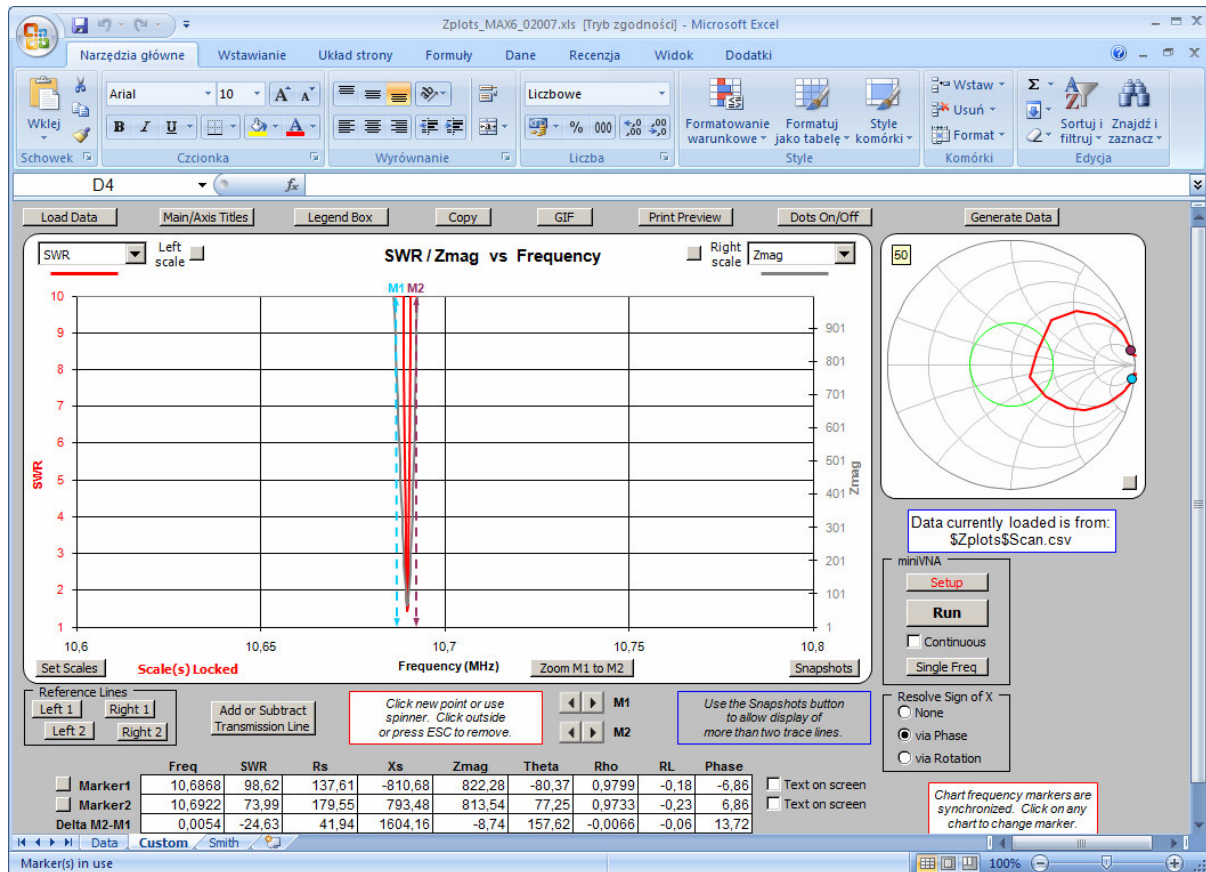
Funkcja SET SCALE niestety nie działa dla osi X

The screenshot shows the "Set Scale(s) Min/Max and Log/Linear" dialog box. The dialog contains the following fields and controls:

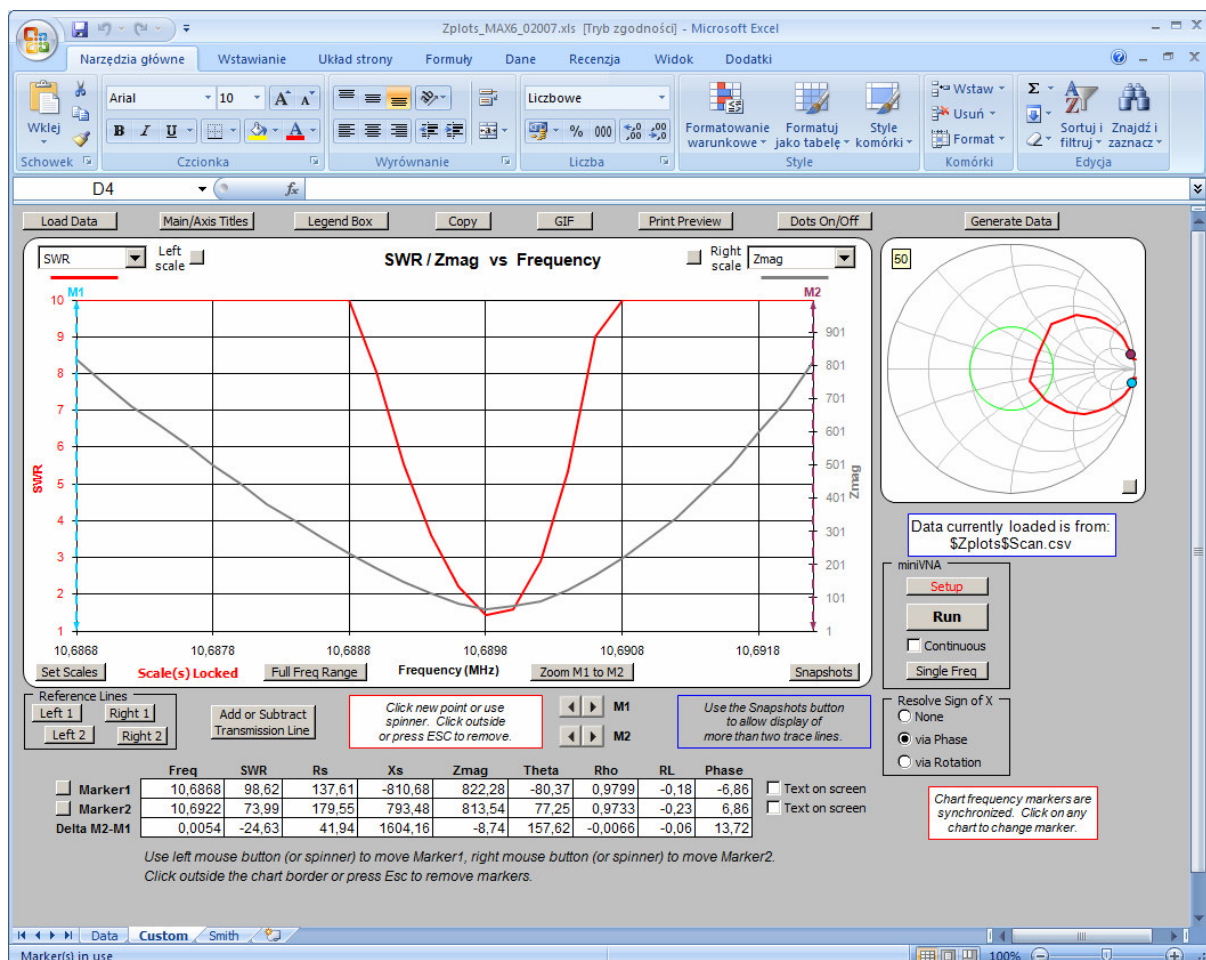
- Y axis (left) scale:** Max(top) 10, Min(bot) 1, Logarithmic checkbox (unchecked), Clear button.
- Y axis (right) scale:** Max(top) 1000, Min(bot) 1, Logarithmic checkbox (unchecked), Clear button.
- X axis (Frequency) scale:** Min(left) 10,65, Max(right) 10,75, Logarithmic checkbox (unchecked), Clear button.

At the bottom of the dialog are buttons for "OK", "Close", and "Apply".

## Jak zrobić ZOOM Stawiamy markery M1 M2 za pomocą myszki ( lewy – prawy przycisk)



## Klikamy ZOOM M1 to M2



By ponownie zobaczyć pełen zakres naciskamy **FULL FREQ RANGE** a następnie **RUN**